



GAT MONTHLY MEMBERSHIP PROGRESS REPORT

Results as of: 6/30/2023

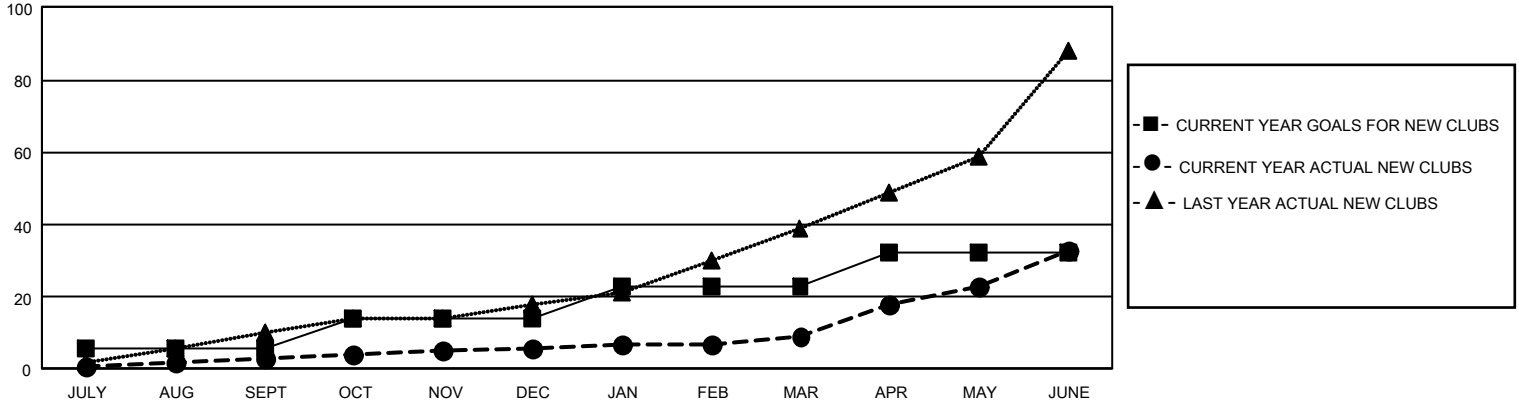
GMT Constitutional Area 5 - E, Group O

REPORT DOES NOT INCLUDE CLUBS IN UNDISTRICTED AREAS.

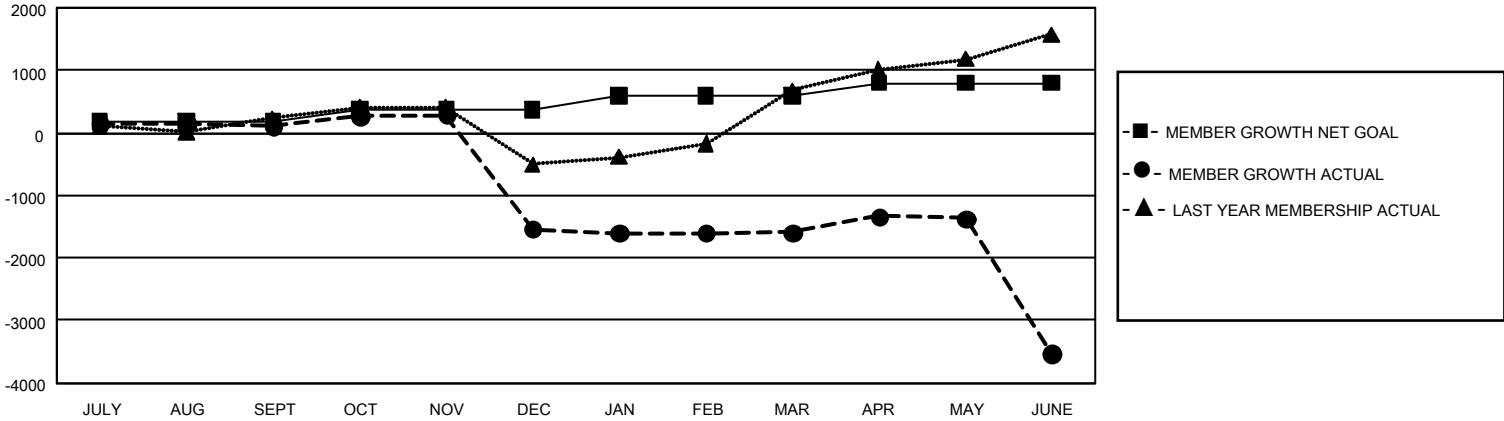
Clubs			
RESULTS FOR 2022-2023			
QUARTER	NEW CLUB GOAL	NEW CLUBS	DROPPED CLUBS
JULY/AUG/SEPT	18	3	3
OCT/NOV/DEC	24	3	40
JAN/FEB/MAR	27	3	9
APR/MAY/JUNE	27	24	32

Members			
RESULTS FOR 2022-2023			
QUARTER	MEMBER GROWTH NET GOAL	MEMBER GROWTH ACTUAL	DROPPED MEMBERS ACTUAL (including transfers)
JULY/AUG/SEPT	172	1,020	705
OCT/NOV/DEC	200	595	2,217
JAN/FEB/MAR	215	750	599
APR/MAY/JUNE	212	1,536	3,228

GOALS AND ACTUAL NEW CLUBS CUMULATIVE



GOALS AND ACTUAL MEMBERS CUMULATIVE



DROPPED CLUBS: 84	353 CLUBS OF 579 ADDED 1 OR MORE NEW MEMBERS	<u>GENDER DISTRIBUTION</u>	
<u>DROPPED MEMBERS</u>		MALE	7,972 (49.00%)
DECEASED	89	FEMALE	8,294 (50.97%)
CLUB CANCELLED	2,289	NON BINARY	0 (0.00%)
OTHER	4,371	PREFER NOT TO ANSWER	5 (0.03%)
TOTAL	6,749	TOTAL FAMILY UNIT MEMBERS	6,410
	CLICK HERE FOR CUMULATIVE MEMBERSHIP DATA	FAMILY MEMBERS PAYING HALF DUES	4,030